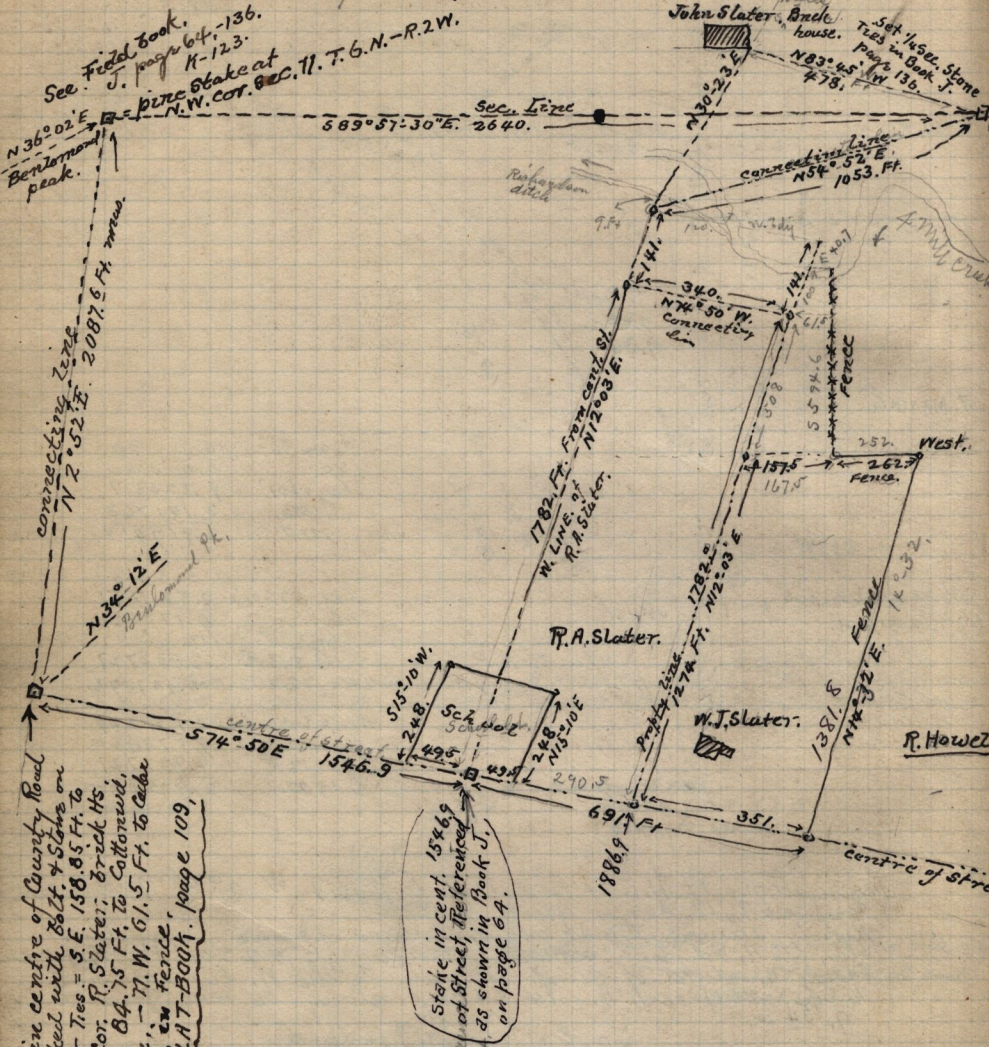


182

not completed nor paid

Feb. 10 - 1896.
 Survey made for R.A. Slater & Wm J. Slater in N.W. 1/4
 Sec. 11. = 11. Tp. 6. N. R. 2. W.

See Field book,
 J. page 64, - 136.
 K-123.
 See pipe stake at
 N.W. cor. Sec. 11. T. 6. N. - R. 2. W.



Point in centre of County Road
 marked with Bolt & Slabs on
 top. - Trees = 5 E. 156.85 Ft. to
 N.W. Cor. R. Slater; brick Hs.
 - S.E. 1/4, 75 Ft. to Cottonwood,
 tree. - N.W. 1/4, 5 Ft. to Cedar
 Post, in fence. page 109,
 PLAT-BOOK.

stone in cent.
 of street
 as shown in Book J.
 on page 64.

Description of W.J. Slater tract as surveyed by me,
 Pt. of N.W. 1/4 of Sec. 11, T. 6. N. - R. 2. W. Beg. at a point in
 cent. of St. 2087.6 ft. S 2° 52' W. and 1886.9 ft. S 74° 50' E. from
 the N.W. Cor. of said 1/4 Sec. - thence N 12° 03' E. 1882. ft. E 40.77
 S 594.6 Ft. - E 252. ft. - S 14° 32' W 1381.8 ft. to cent. of St. N 74° 50'
 351. ft. to beg. ? acrs.

W. J. Slater tract

	N	S	E	W.
N 12° 03' E	1882.0		392.8	
S E	40.7		40.7	
S E	594.6	594.6		
S 14° 32' W	252.0		252.0	
N 74° 50' W	1381.8	1337.6		346.8
	351.0	91.8		838.7
		1932.2	1932.2	145.5

issued May 2 - 1898.